



## How to setup:


1. Download the **WebOS Kindle-Import Plugin.zip** plugin file.

2. Start Calibre by double clicking on its  application icon.

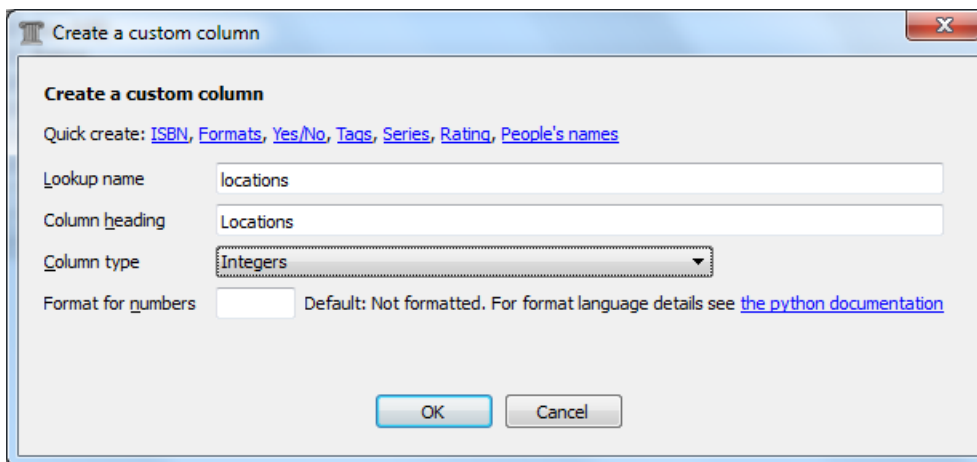
3. First, you will add two new custom columns in Calibre.  
Click on the **Preferences** toolbar icon:

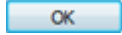



4. Click on the  button under the **Interface** preference category.

5. Click on the  button to add the *Locations* custom column.

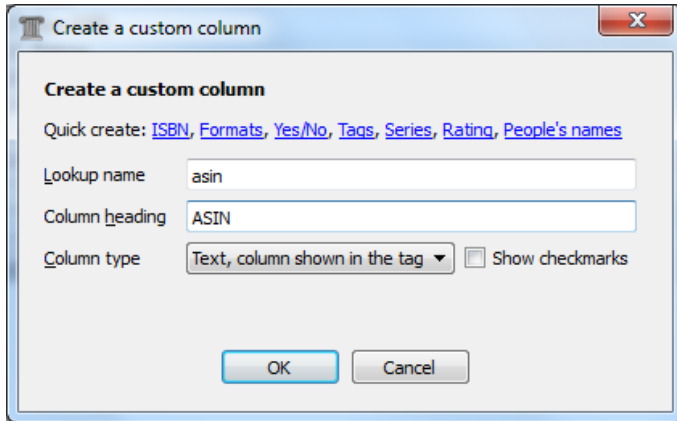
6. Enter “locations” for **Lookup name**, “Locations” for **Column heading**, and select “Integers” for **Column type**.


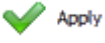

The image is a screenshot of the 'Create a custom column' dialog box in Calibre. The dialog has a title bar with a Calibre icon and the text 'Create a custom column'. Inside the dialog, there is a section titled 'Create a custom column' with a link for 'Quick create: ISBN, Formats, Yes/No, Tags, Series, Rating, People's names'. Below this are four input fields: 'Lookup name' with the text 'locations', 'Column heading' with the text 'Locations', 'Column type' with a dropdown menu showing 'Integers', and 'Format for numbers' with an empty text box. A note below the last field says 'Default: Not formatted. For format language details see [the python documentation](#)'. At the bottom of the dialog are 'OK' and 'Cancel' buttons.

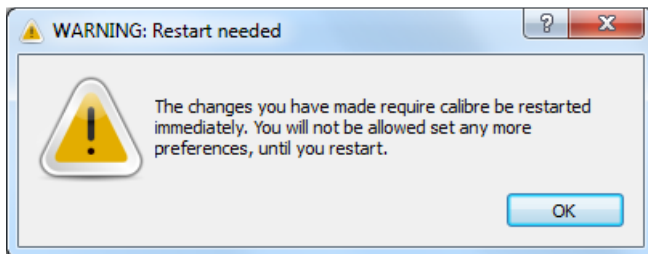
7. Click on the  button to create the new *Locations* custom column.

8. Click on the  button again to add the *ASIN* custom column.


9. Enter “asin” for **Lookup name**, “ASIN” for **Column heading**, and select “Text, column shown in the tag browser” for **Column type**.



10. Click on the  button to create the new *ASIN* custom column.
11. Click on the  toolbar button at the top of the preferences window to apply the custom column changes.
12. Click on the  button of the **WARNING: Restart needed** window.




13. Click on the main window's  button to close the Calibre application.

14. Restart Calibre by double clicking on its  application icon.

15. Next, you will add *Locations* and *ASIN* to the file name template in **Sending books to devices**.


Click on the **Preferences** toolbar icon:



16. Click on the  *Sending books to devices* button under the **Import/Export** preference category.

17. Enter "{author\_sort}/{title} - {authors} - {#asin} - {#locations}" for **Save template**.




18. Click on the  **Apply** toolbar button to apply the file name template changes.

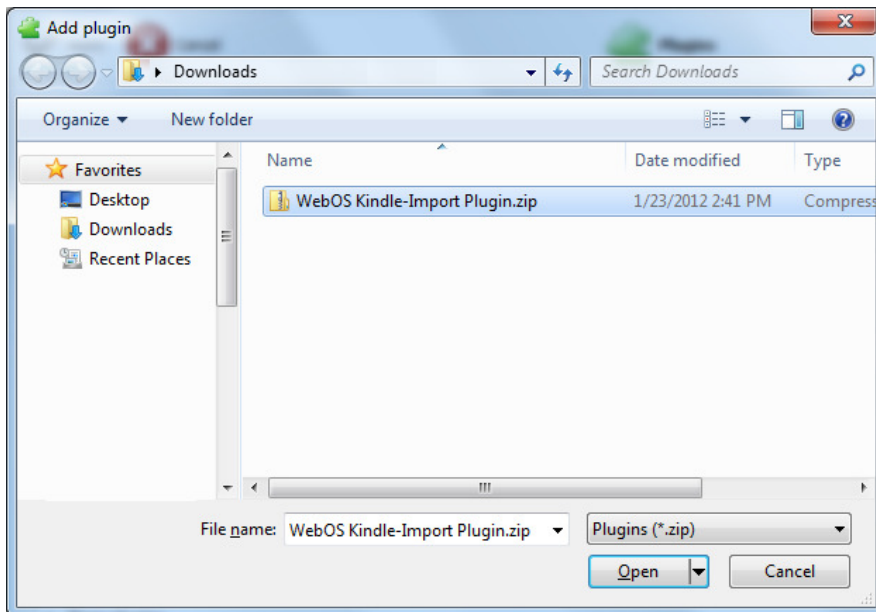
19. Next, you will import the WebOS Kindle-Import plugin.



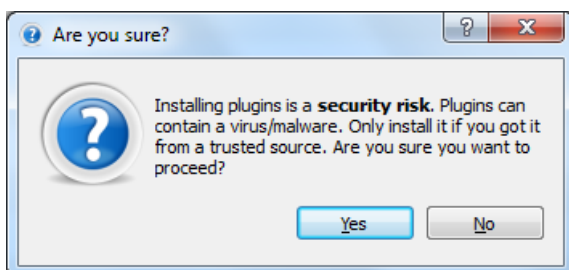
Click on the **Plugins** button under the **Advanced** preference category.

20. Click on the  button to load the plugin.

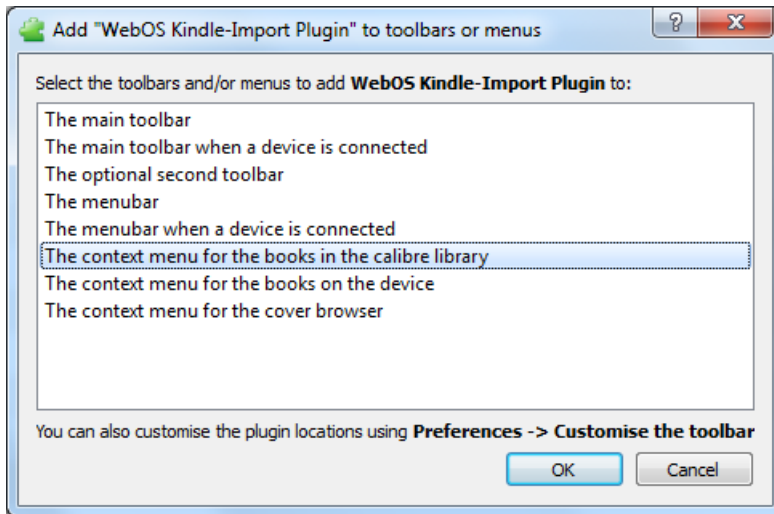
21. Navigate to the **WebOS Kindle-Import Plugin.zip** file, select it, and click the  button.




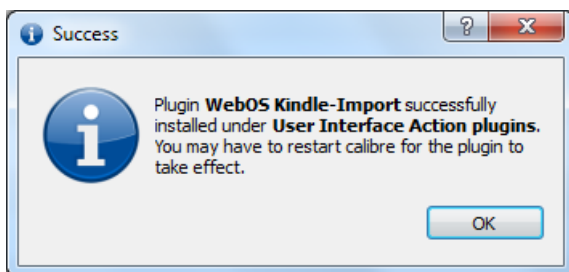
22. Click on the  button of the **Are you sure?** window.

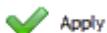


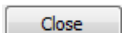
23. Select **The context menu for the books in the calibre library** and click on the  button to add **WebOS Kindle-Import plugin** to the context menu.




24. Click on the  button of the **Success** window.



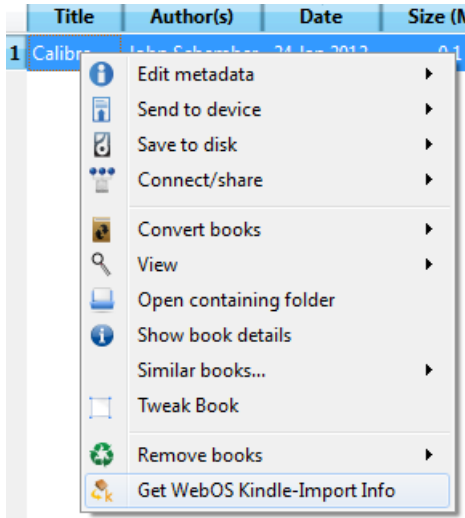
25. Click on the  toolbar button to apply the plugin changes.

26. Click on the  button of the **calibre – Preferences** window.

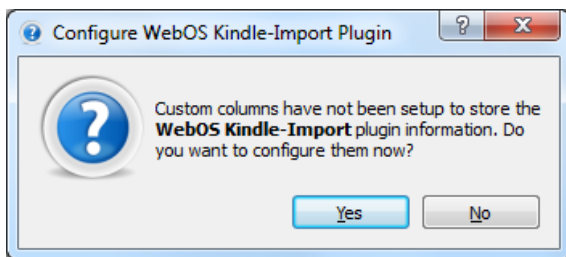
27. Click on the main window's  button to close the Calibre application.

28. Restart Calibre by double clicking on its  application icon.

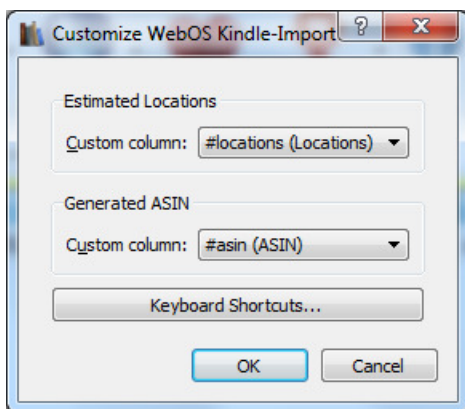
29. Now, you will configure the plugin to use the new custom columns to store the *Locations* and *ASIN* information. Right click on a book in Calibre's list view and select the **Get WebOS Kindle-Import Info** menu item.



30. Click on the **Yes** button of the **Configure WebOS Kindle-Import Plugin** window to configure the plugin.



31. Select "#locations (Locations)" for **Estimated Locations** and "#asin (ASIN)" for **Generated ASIN**, then click on the **OK** button to save the custom column changes.



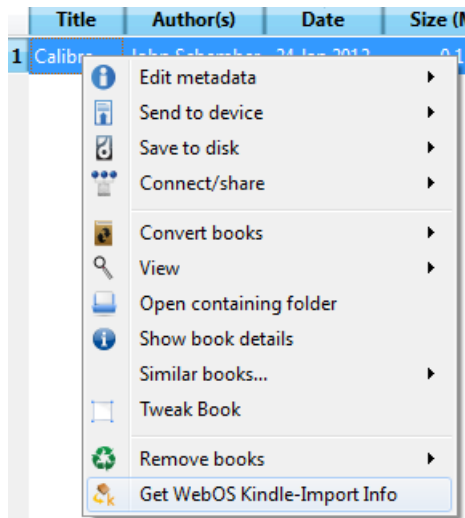
**Congratulations! The WebOS Kindle-Import plugin is ready to use.**

# How to use:

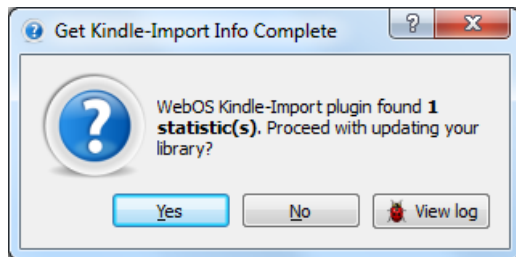
Note: Books must be available in the MOBI format. If not, you must first convert them to the MOBI format using the **Convert books** toolbar button:




1. Select one or more books in Calibre. Right click and select the **Get WebOS Kindle-Import Info** menu item.



2. The plugin will process the book(s) and display a prompt when finished. Click the  button to populate the *Locations* and *ASIN* columns for the selected books.



3. You can now send the book(s) to your WebOS device (e.g. HP Touchpad) using the  Sending books to devices toolbar button.