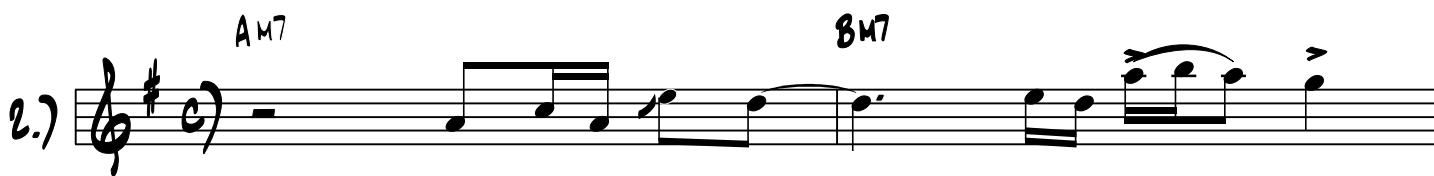
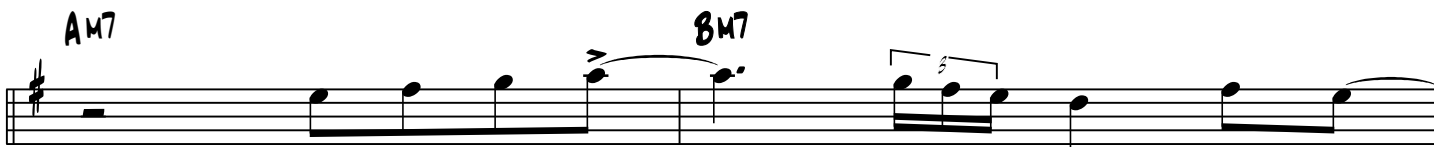
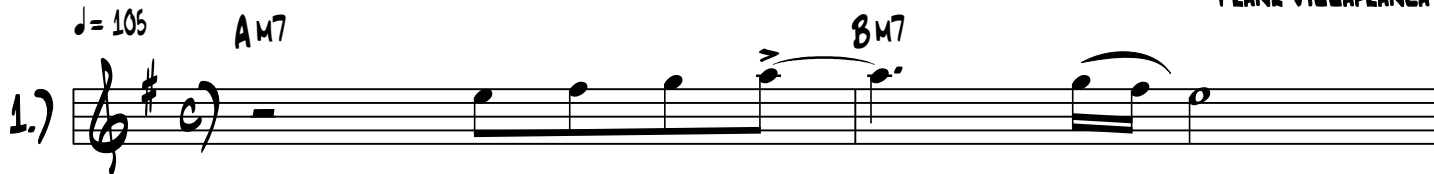


FLUTE
CD TRACK 1

SMOOTH JAZZ GROOVE 1
MEDIUM TEMPO JAZZ FUNK

COMPOSED & ARRANGED BY:
ANDREW D. GORDON &
FRANK VILLAFRANCA

♩ = 105



3.)

Scales used in this example:

A minor scale, Dorian mode

A minor Pentatonic scale

An A minor scale is used here with an emphasis on the natural 6th, F# and the 9th or 2nd, B, degrees of the scale. The groove is basically in A minor, the dorian mode, which is derived from the G major scale played from A to A. When playing contemporary grooves, quite often, one pentatonic scale will work over all the chords as in this case the A minor works over the Bm7, you just emphasize the chord tones, B, D, F# & A. Except for one F natural and one C#, all the notes used in this example are from the A minor (dorian) scale.

In example 3 above, measures 4, 5 & 6 together demonstrate a "Bebop" style riff.