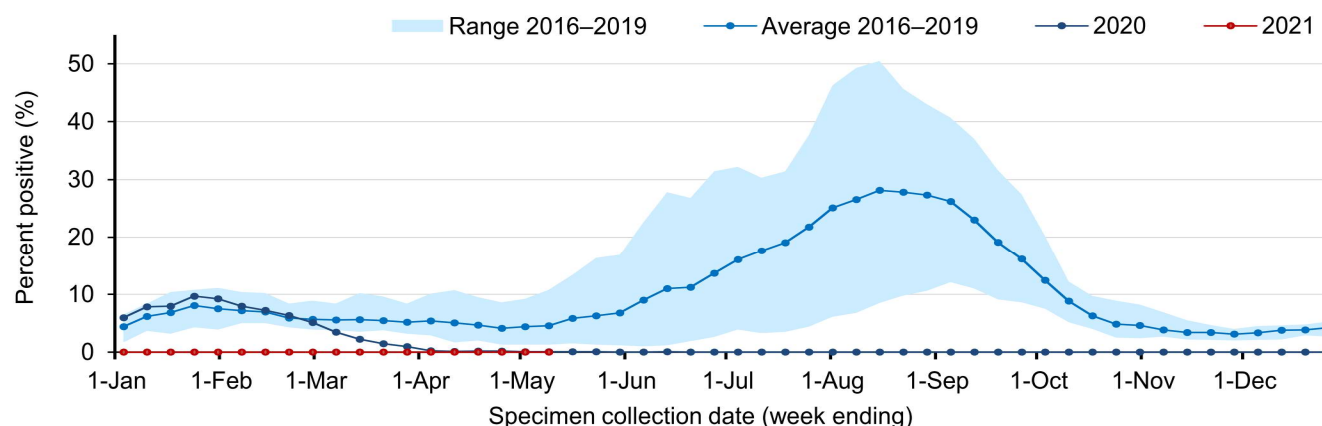


## How much influenza is circulating?

The graph below shows the proportion of tests found to be positive for influenza with the red line showing weekly counts for 2021, the dark blue line showing counts for 2020, the light blue line showing the average for 2016 to 2019 and the shaded area showing the range recorded for 2016 to 2019.

Figure 14. Proportion of tests positive for influenza, NSW, 1 January 2016 to 9 May 2021

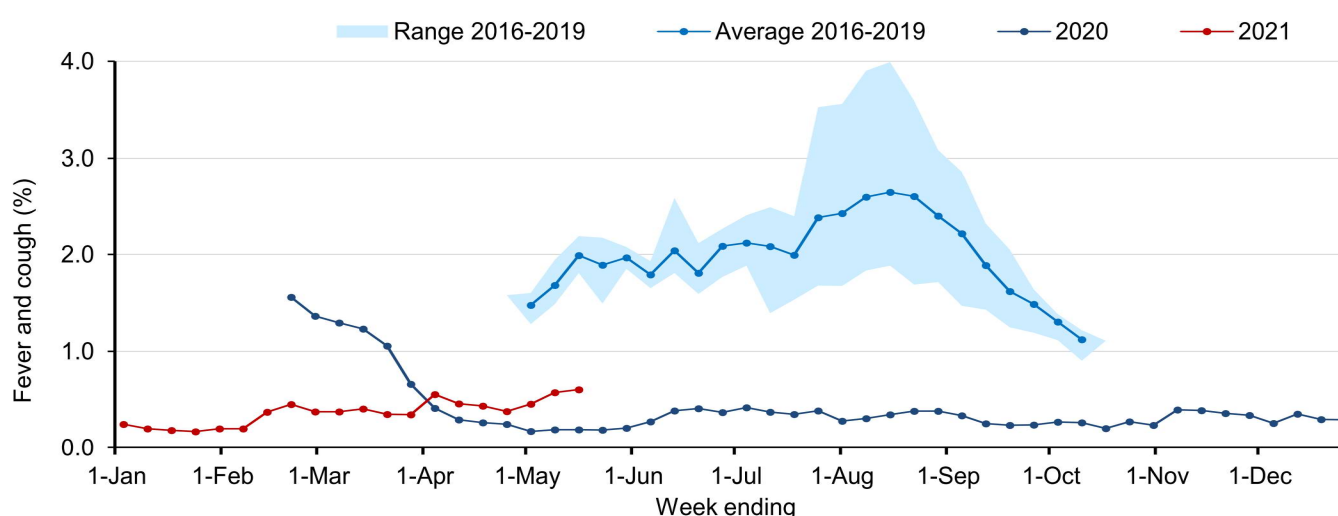


**Interpretation:** In the week ending 9 May, the percent of influenza tests that were positive continued to be very low (<0.01%), indicating limited influenza transmission in the community. Since early March 2020, this percentage has remained far lower than the usual range for the time of year. There have been 7 influenza cases reported in 2021. Investigations into the source of these cases are ongoing, and further confirmatory testing is underway.

## How many people have flu-like symptoms in the community?

FluTracking is an online survey that asks participants to report flu-like symptoms, such as fever or cough, in the last week. Across NSW approximately 25,000–30,000 people participate each week. The survey usually commences at the beginning of May in line with the flu season but has continued throughout the year due to the COVID-19 outbreak.

Figure 15. Proportion of FluTracker participants reporting influenza-like illness, NSW, 1 January 2016 to 16 May 2021



**Interpretation:** In NSW in the week ending 16 May of the 21,135 people surveyed, 128 people (0.61%) reported flu-like symptoms. In the last four weeks, 46% (218/469) of new cases of flu-like illness reported having a COVID-19 test. The proportion of people being tested for COVID-19 has been decreased since January when 80% of people surveyed with flu-like symptoms were being tested.